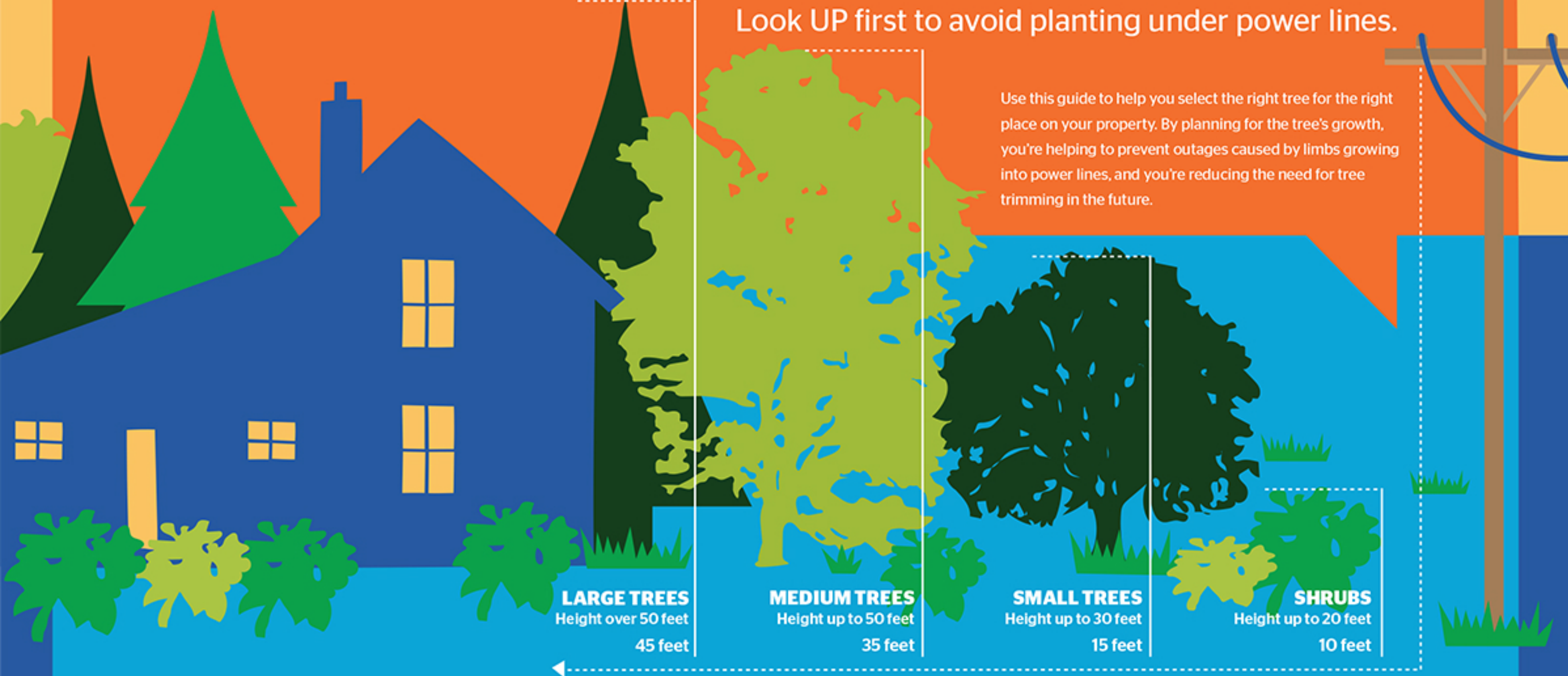




Plant the RIGHT TREE in the RIGHT PLACE

Look UP first to avoid planting under power lines.

Use this guide to help you select the right tree for the right place on your property. By planning for the tree's growth, you're helping to prevent outages caused by limbs growing into power lines, and you're reducing the need for tree trimming in the future.



LARGE TREES
Height over 50 feet
45 feet

MEDIUM TREES
Height up to 50 feet
35 feet

SMALL TREES
Height up to 30 feet
15 feet

SHRUBS
Height up to 20 feet
10 feet

LARGE TREES

Mature Height over 50 feet
45' Minimum Planting Distance
Maple (Sugar, Red)
Poplar (Tulip, Yellow, Eastern, Swamp)
Leyland/Bald Cypress
Southern Magnolia
Oaks (Pin, Northern Red, White, Shumard)

MEDIUM TREES

Mature Height up to 50 feet
35' Minimum Planting Distance
Ornamental Pears
Virginia Pine
Pawpaw
Imperial Honeylocust
American/Foster Holly

SMALL "POWER LINE-FRIENDLY" TREES

Mature Height up to 30 feet
15' Minimum Planting Distance
Buttonbush
Trident Maple
Redbud
Dogwoods
Sweetbay Magnolia

SHRUBS

Mature Height up to 20 feet
10' Minimum Planting Distance
Natchez Crape Myrtle
Sumac
Emerald Green Arborvitae
American Plum
Nellie R. Stevens Holly

REMEMBER: Call 811 before every digging job - even small projects like planting trees and shrubs - to learn where underground lines, pipes and cables are buried in your yard. For more information, visit nespower.com.

